

Oxley

Available Size

182 195 233 257



▼ More **Facade** Styles

ARTIST IMPRESSION ONLY



Traditional Classic



Traditional Vogue



Modern Industrial

For a full list of inclusions, allowances and terms and conditions, please refer to building contract specification. This material is intended as an indication of the items to be included and the general layout of the building and is merely indicative and should not be construed as constituting an offer, guarantee or contract. Noble Home Builders reserves the right to revise plans, specifications, facades and prices without notice or obligation. Artist impression used for illustrative purposes only, facade image may include upgrade features which is extra to standard contract specification. Actual home colours, materials and finishes may vary. Price excludes upgrades and variations that out of contract scope or exceed contract allowance.

Oxley 233

5 3 2

SPECIFICATIONS

HOUSE AREA

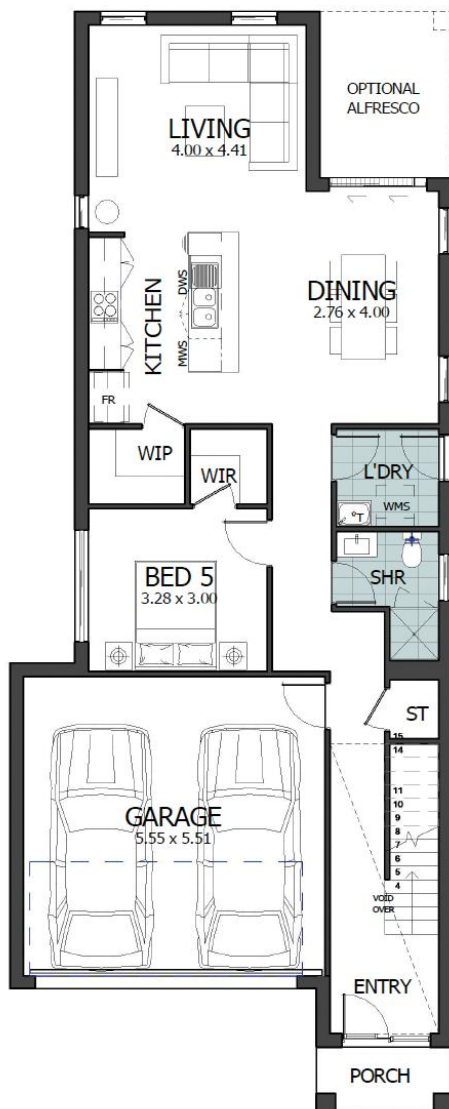
Ground floor living	93.84m ²
First floor living	102.85m ²
Garage	33.59m ²
Porch	3.01m ²
Total area	233.29m ²

LAND REQUIREMENT

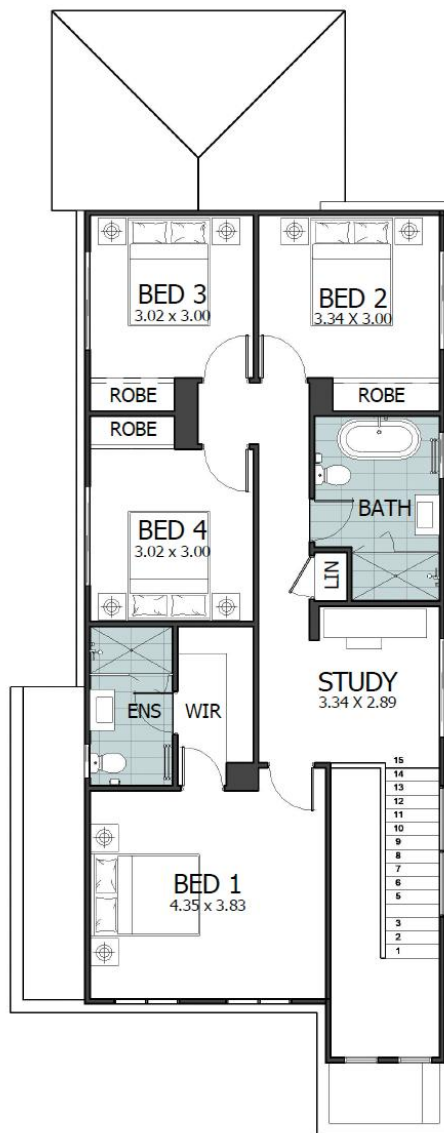
Land Width	
Zero lot	min. 9.2m
Standard lot	min. 10.05m
Land Length	min. 27.57m

OPTIONAL UPGRADE

Balcony & Porch	6m ² +7m ²
Alfresco	from 9m ²



GROUND FLOOR PLAN



FIRST FLOOR PLAN

NOBLE
HOME BUILDERS

