

# Sienna

Available Size  
175 200 239



▼ More **Facade** Styles

ARTIST IMPRESSION ONLY



**Botanic**



**Modern Industrial**



**Traditional Vogue**

For a full list of inclusions, allowances and terms and conditions, please refer to building contract specification. This material is intended as an indication of the items to be included and the general layout of the building and is merely indicative and should not be construed as constituting an offer, guarantee or contract. Noble Home Builders reserves the right to revise plans, specifications, facades and prices without notice or obligation. Artist impression used for illustrative purposes only, facade image may include upgrade features which is extra to standard contract specification. Actual home colours, materials and finishes may vary. Price excludes upgrades and variations that out of contract scope or exceed contract allowance.

# Sienna 200

5 3 1

## SPECIFICATIONS

### HOUSE AREA

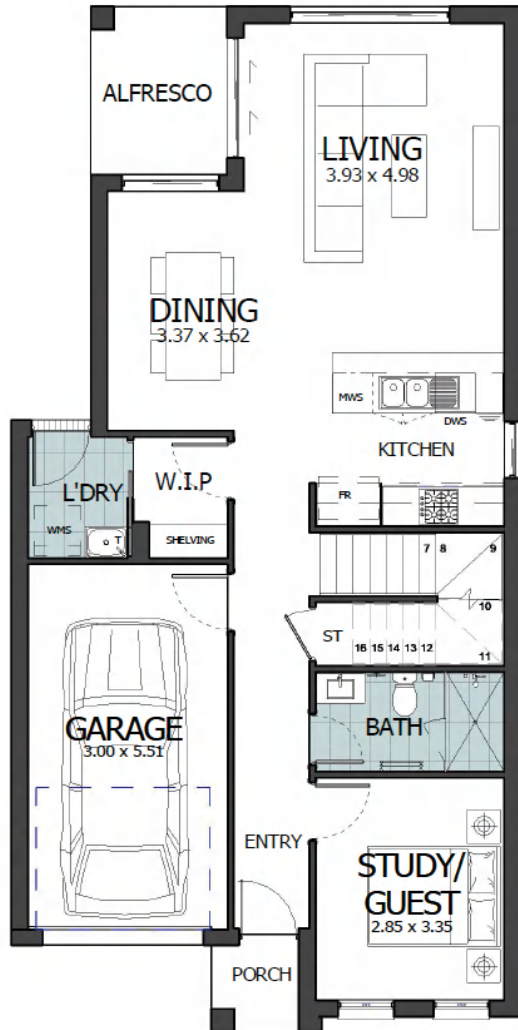
Ground floor living	80m <sup>2</sup>
First floor living	93m <sup>2</sup>
Garage	21m <sup>2</sup>
Porch	1m <sup>2</sup>
Alfresco	5m <sup>2</sup>
Total area	200m <sup>2</sup>

### LAND REQUIREMENT

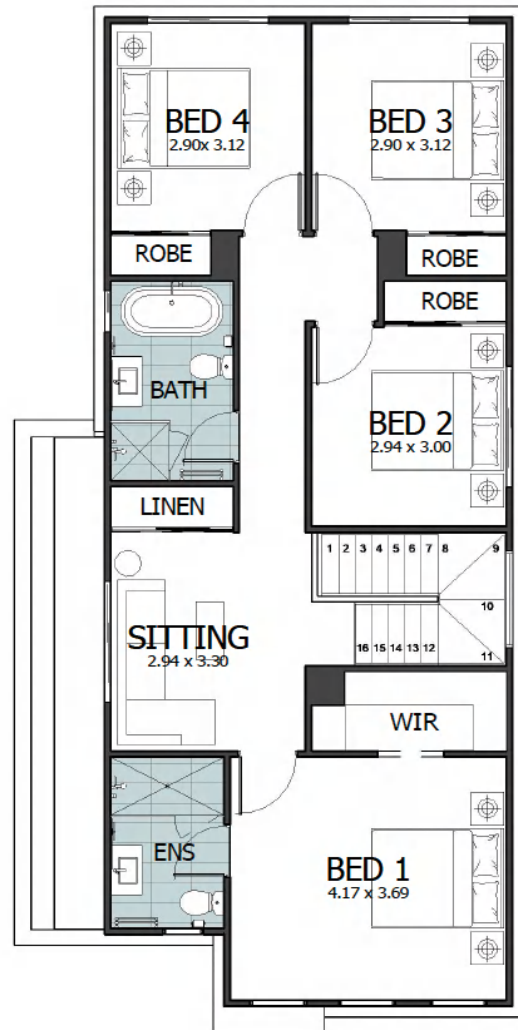
Land Width	
Zero lot	min. 8.72m
Standard lot	min. 9.57m
Land Length	min. 25.73m

### OPTIONAL UPGRADE

Double garage	35m <sup>2</sup>
Balcony & Porch	6m <sup>2</sup> +7m <sup>2</sup>
Alfresco	from 9m <sup>2</sup>



GROUND FLOOR PLAN



FIRST FLOOR PLAN

