

Barossa

Available Size
205



▼ More **Facade** Styles

ARTIST IMPRESSION ONLY



Traditional Trend



Traditional Vogue



Modern Industrial

For a full list of inclusions, allowances and terms and conditions, please refer to building contract specification. This material is intended as an indication of the items to be included and the general layout of the building and is merely indicative and should not be construed as constituting an offer, guarantee or contract. Noble Home Builders reserves the right to revise plans, specifications, facades and prices without notice or obligation. Artist impression used for illustrative purposes only, facade image may include upgrade features which is extra standard contract specification. Actual home colours, materials and finishes may vary. Price excludes upgrades and variations that out of contract scope or exceed contract allowance.

Barossa 205

 4
  3
  1

SPECIFICATIONS

HOUSE AREA

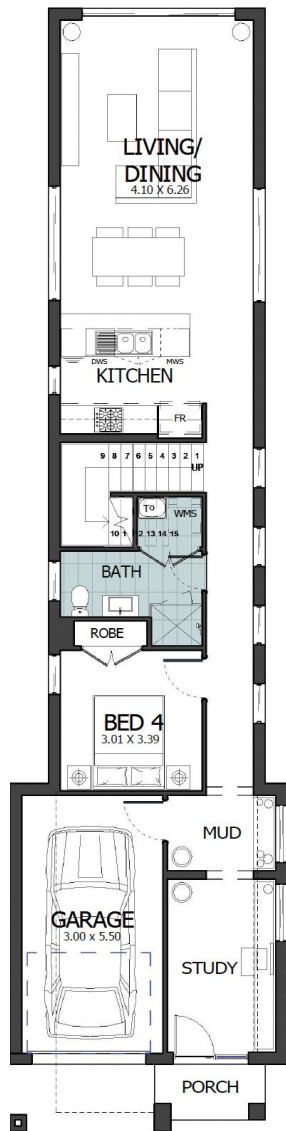
Ground floor living	92.49m ²
First floor living	90.65m ²
Garage	18.83m ²
Porch	2.89m ²
Total area	204.86m ²

LAND REQUIREMENT

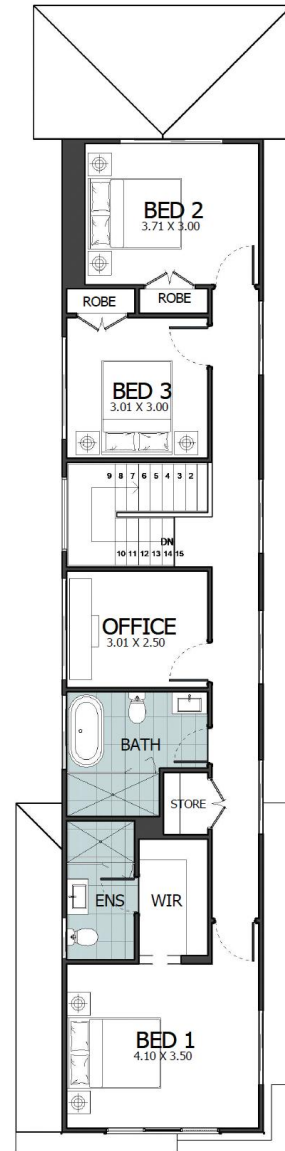
Land Width	Standard lot	min. 7m
Land Length		min. 32.2m

OPTIONAL UPGRADE

Double garage	35m ²
Balcony & Porch	6m ² +7m ²
Alfresco	from 9m ²



GROUND FLOOR PLAN



FIRST FLOOR PLAN


NOBLE
 HOME BUILDERS

