

# Cheriton

**Available Size**  
202 205 222 225



▼ More **Facade** Styles

ARTIST IMPRESSION ONLY



**Hampton**



**Traditional Vogue**



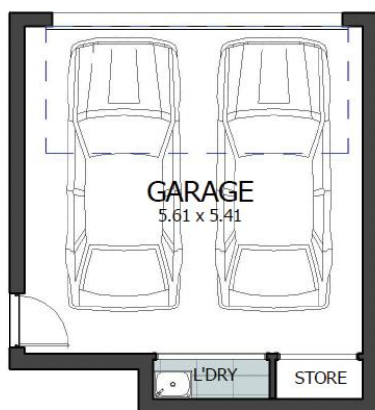
**Modern Industrial**

For a full list of inclusions, allowances and terms and conditions, please refer to building contract specification. This material is intended as an indication of the items to be included and the general layout of the building and is merely indicative and should not be construed as constituting an offer, guarantee or contract. Noble Home Builders reserves the right to revise plans, specifications, facades and prices without notice or obligation. Artist impression used for illustrative purposes only, facade image may include upgrade features which is extra to standard contract specification. Actual home colours, materials and finishes may vary. Price excludes upgrades and variations that out of contract scope or exceed contract allowance.

Extended Living

# Cheriton 225MG

 6  3.5  2



## SPECIFICATIONS

### HOUSE AREA

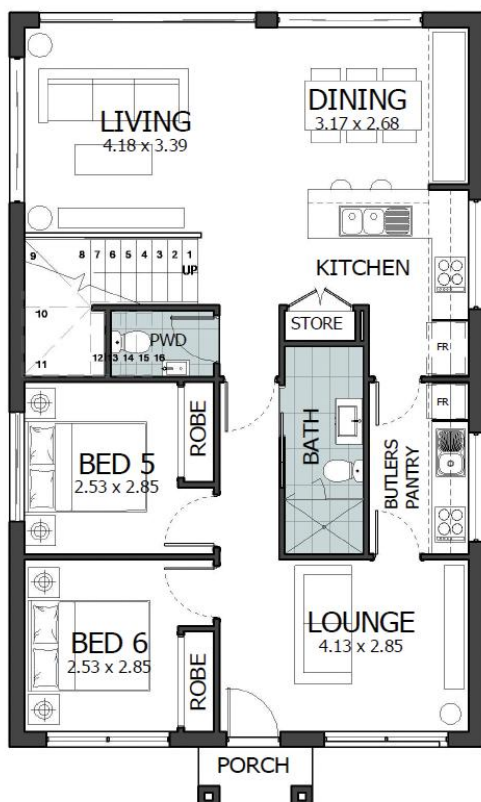
Ground floor living	95.46m <sup>2</sup>
First floor living	89.16m <sup>2</sup>
Garage	38.97m <sup>2</sup>
Porch	1.90m <sup>2</sup>
Total area	225.48m <sup>2</sup>

### LAND REQUIREMENT

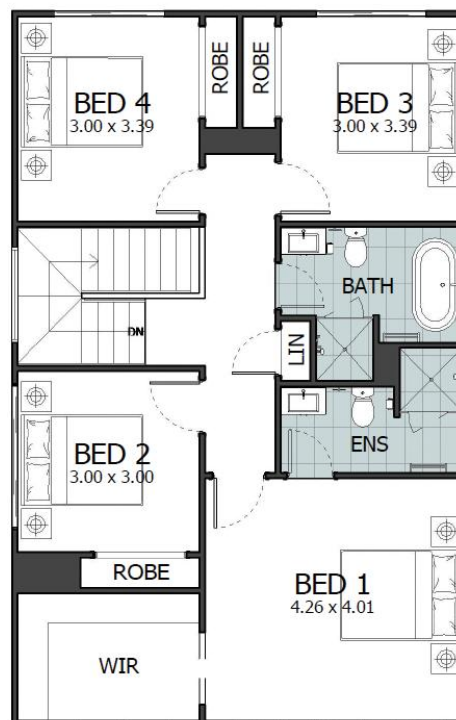
Land Width	
Zero lot	min. 10.00m
Standard lot	min. 10.00m
Land Length	min. 25.00m

### OPTIONAL UPGRADE

Balcony & Porch	6m <sup>2</sup> +7m <sup>2</sup>
Alfresco	from 9m <sup>2</sup>



GROUND FLOOR PLAN



FIRST FLOOR PLAN