

# Aurora

Available Size

172 210 230



▼ More **Facade** Styles

ARTIST IMPRESSION ONLY



**Traditional Classic**



**Modern Industrial**



**Traditional Vogue**

Extended Living

# Aurora 210MG

5 3.5 1

## SPECIFICATIONS

### HOUSE AREA

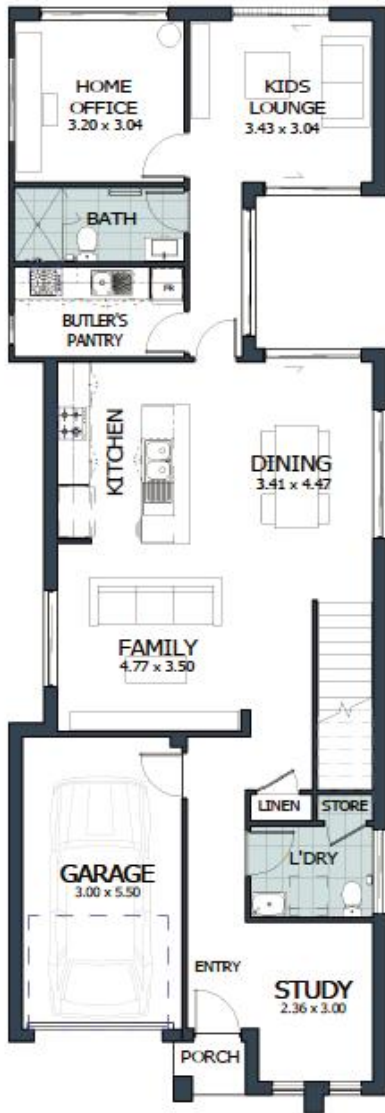
Ground floor living	109.02m <sup>2</sup>
First floor living	80.75m <sup>2</sup>
Garage	18.79m <sup>2</sup>
Porch	1.35m <sup>2</sup>
Total area	209.91m <sup>2</sup>

### LAND REQUIREMENT

Land Width	
Zero lot	min. 8.96m
Standard lot	min. 8.96m
Land Length	min. 28.9m

### OPTIONAL UPGRADE

Double garage	35m <sup>2</sup>
Balcony & Porch	6m <sup>2</sup> +7m <sup>2</sup>
Alfresco	from 9m <sup>2</sup>



GROUND FLOOR PLAN



FIRST FLOOR PLAN



For a full list of inclusions, allowances and terms and conditions, please refer to building contract specification. This material is intended as an indication of the items to be included and the general layout of the building and is merely indicative and should not be construed as constituting an offer, guarantee or contract. Noble Home Builders reserves the right to revise plans, specifications, facades and prices without notice or obligation. Artist impression used for illustrative purposes only, facade image may include upgrade features which is extra to standard contract specification. Actual home colours, materials and finishes may vary. Price excludes upgrades and variations that out of contract scope or exceed contract allowance.